



LEADING PROJECT
SUPPLIER & STOCKIST
OF ALL TYPES OF
ELECTRICAL GOODS



Chandan Electric Corporation
Since 1985

Office Add: 89, Princess Street, 2nd Flr., Peerbhoy Building, Pathak Wadi, Lohar Chawl, Mum-02.

Telephone: 022 - 2208 7580 / 3956 7492 / 4003 9101 Fax: 022 - 2201 9101

Mobile: 91 - 9820486600 / 9029895008 Website: www.chandanelectric.in

Email: chandan_electric@hotmail.co.in / info.chandanelectric@gmail.com



**BRACO DOUBLE COMPRESSION NICKLE PLATED
BRASS CABLE GLANDS FOR ARMOURD CABLES**

O.D. RANGE (MM)	NIPPLE ENTRY	WEATHER PROOF		FLAME PROOF	
		CAT NO.	RATE/ UNIT	CAT NO.	RATE/ UNIT
8 - 12	5/8"	BPW 3/8"	171.00	BPF 3/8"	195.00
8 - 13	5/8"	BPW 1/2"	171.00	BPF 1/2"	195.00
8 - 13	3/4"	BPW 001S	187.00	BPF 001S	216.00
11 - 15	3/4"	BPW 5/8"	219.00	BPF 5/8"	252.00
12.5 - 16.5	3/4"	BPW 001	219.00	BPF 001	252.00
12.5 - 16.5	3/4"	BPW 01S	235.00	BPF 01S	270.00
15 - 18	3/4"	BPW 01	263.00	BPF 01	302.00
15 - 18	1"	BPW 01L	300.00	BPF 01L	345.00
18 - 20	1"	BPW 02	340.00	BPF 02	391.00
18 - 20	3/4"	BPW 02S	352.00	BPF 02S	405.00
20 - 23	1"	BPW 1"	340.00	BPF 1"	391.00
20 - 23	1"	BPW 03	346.00	BPF 03	398.00
23 - 26	1"	BPW 04	472.00	BPF 04	543.00
23 - 26	1-1/4"	BPW 04L	522.00	BPF 04L	600.00
26 - 30	1-1/4"	BPW 05	587.00	BPF 05	675.00
26 - 30	1-1/2"	BPW 05L	675.00	BPF 05L	776.00
30 - 33	1-1/2"	BPW 06	840.00	BPF 06	966.00
30 - 33	1-1/4"	BPW 06S	855.00	BPF 06S	983.00
33 - 37	1-1/2"	BPW 07	993.00	BPF 07	1142.00
37 - 41	2"	BPW 08	1194.00	BPF 08	1373.00
41 - 46	2"	BPW 09	1290.00	BPF 09	1490.00
46 - 52	2"	BPW 010	1570.00	BPF 010	1806.00
46 - 52	2-1/2"	BPW 010L	1803.00	BPF 010L	2070.00
52 - 60	2-1/2"	BPW 011	2350.00	BPF 011	2700.00
60 - 66	3"	BPW 012	2764.00	BPF 012	3179.00
66 - 72	3"	BPW 013S	3555.00	BPF 013S	4088.00
72-78	3-1/4"	BPW 013	3750.00	BPF 013	4310.00
78 - 83	3-1/2"	BPW 014	4440.00	BPF 014	5106.00
83 - 93	4"	BPW 015	5070.00	BPF 015	5831.00
93 - 104	4-1/2"	BPW 016	6240.00	BPF 016	7176.00



BRACO SINGLE COMPRESSION BRASS GLANDS COMMERCIAL SERIES					
O.D. RANGE (MM)	CAT NO.	RATE/ UNIT	O.D. RANGE (MM)	CAT NO.	RATE/ UNIT
9.0-13.5	BC 3/8"	42.18	27.0-30.0	BC 1-1/4"	169.00
10.0-14.5	BC 1/2"L	44.40	30.0-34.0	BC 1-3/8"	224.00
10.0-14.5	BC 1/2"H	58.80	34.0-38.0	BC 1-1/2"	240.00
10.0-14.5	BC 5/8"L	45.90	38.0-44.0	BC 1-3/4"	298.00
10.0-14.5	BC 5/8"H	59.00	44.0-50.0	BC 2"	390.00
14.0-17.0	BC 3/4"L	52.60	50.0-56.5	BC 2-1/4"	506.00
14.0-17.0	BC 3/4"H	64.90	56.5-61.0	BC 2-1/2"	573.00
17.0-19.5	BC 7/8"L	68.40	61.0-68.0	BC 2-3/4"	694.00
17.0-19.5	BC 7/8"H	79.20	68.0-74.0	BC 3"	865.00
19.5-23.0	BC 1"L	87.00	74.0-80.0	BC 3-1/4"	977.00
19.5-23.0	BC 1"H	120.00	80.0-86.0	BC 3-1/2"	1400.00
23.0-27.0	BC 1-1/8"	138.00	86.0-98.0	BC 4"	1890.00



BRACO SINGLE COMPRESSION BRASS GLANDS LONG NIPPLE					
O.D. RANGE (MM)	CAT NO.	RATE/ UNIT	O.D. RANGE (MM)	CAT NO.	RATE/ UNIT
10.0-14.5	BC 1/2"LN	68.00	17.0-19.5	BC 7/8"LN	91.00
10.0-14.5	BC 5/8"LN	68.00	19.5-23.0	BC 1"LN	138.00
14.0-17.0	BC 3/4"LN	75.00			

BRACO SINGLE COMPRESSION HEAVY DUTY BRASS GLANDS (SIBG)					
THREAD SIZE (MM)	CAT NO.	RATE/ UNIT	THREAD SIZE (MM)	CAT NO.	RATE/ UNIT
12	SIBG 1612	63.40	38	SIBG 3638	410.00
16	SIBG 1616	87.75	51	SIBG 4251	534.00
19	SIBG 1619	89.70	51	SIBG 5451	815.00
19	SIBG 2119	145.00	63	SIBG 5463	842.00
25	SIBG 2125	120.00	63	SIBG 6063	945.00
25	SIBG 2925	257.00	76	SIBG 6675	1110.00
32	SIBG 2932	264.00	83	SIBG 7882	1770.00
38	SIBG 2938	257.00			

BRACO DOUBLE COMPRESSION NICKLE PLATED BRASS CABLE GLANDS FOR UNARMOURD CABLES					
O.D. RANGE (MM)	CAT NO.	RATE/ UNIT	O.D. RANGE (MM)	CAT NO.	RATE/ UNIT
5 - 10	BPT 001SS	174.00	36 - 41	BPT 08	1110.00
10 - 13.5	BPT 001S	174.00	41 - 44	BPT 09	1198.00
11 - 14.5	BPT 001	204.00	44 - 52	BPT 010L	1677.00
11 - 14.5	BPT 01S	219.00	52 - 55	BPT 011	2185.00
14 - 18	BPT 01L	282.00	55 - 60	BPT 011L	2250.00
18 - 20	BPT 02	314.00	60 - 66	BPT 012	2570.00
20 - 23	BPT 03SP	320.00	66 - 72	BPT 013SL	3306.00
23 - 26	BPT 04L	486.00	72 - 78	BPT 013	3306.00
26 - 30	BPT 05L	545.00	78 - 83	BPT 014	4129.00
30 - 33	BPT 06SP	783.00	83 - 93	BPT 015	4715.00
33 - 36	BPT 07 SP	944.00	93 - 104	BPT 016	5803.00

BRACO FLANGE TYPE BRASS CABLE GLANDS					
O.D. RANGE (MM)	CAT NO.	RATE/ UNIT	O.D. RANGE (MM)	CAT NO.	RATE/ UNIT
12.0-16.5	FL 5	110.00	37.0-42.0	FL 38	455.00
15.0-19.0	FL 4	132.00	40.5-44.0	FL 001	465.00
18.5-20.5	FL 3	144.00	43.5-52.0	FL 002	546.00
20.5-24.5	FL 2	187.00	51.0-58.0	FL 003	640.00
24.0-30.0	FL 1	222.00	56.5-67.0	FL 0033	751.00
29.5-34.0	FL 11	275.00	66.0-76.0	FL 004	1010.00
32.5-35.0	FL 0	363.00	75.0-83.0	FL 005	1820.00
34.5-38.0	FL 00	387.00			



Note :

- GST Will be charged extra as applicable.
- Prices Listed Above are on the basis of Ex-Works Braco.
- This Price List supercedes all our previous Price Lists.
- Prices are subject to change without prior notice.
- All Glands are standard Nickel Plated-cadmium and other plating available on Request.
- All Glands are Standard ET Thread - NPT and Metric Thread available on Request.

Also Available on Request :

BW CW A2 And E1W Type Glands.

Earth Tags and Shrouds.

Adaptors Reducers and Stopping Plugs.



BRACO STAINLESS STEEL DOUBLE COMPRESSION CABLE GLANDS

O.D. RANGE (MM)	NIPPLE ENTRY	CAT NO.	WEATHER PROOF		FLAME PROOF		
			SS 304 RATE/ UNIT	SS 316 RATE/ UNIT	CAT NO.	SS 304 RATE/ UNIT	SS 316 RATE/ UNIT
8 - 12	5/8"	SSW 3/8"	490.00	630.00	SSF 3/8"	540.00	690.00
8 - 13	5/8"	SSW 1/2"	490.00	630.00	SSF 1/2"	540.00	690.00
8 - 14	3/4"	SSW 001S	490.00	630.00	SSF 001S	540.00	690.00
11 - 15	3/4"	SSW 5/8"	540.00	700.00	SSF 5/8"	590.00	770.00
12.5 - 16.5	3/4"	SSW 001	540.00	700.00	SSF 001	590.00	770.00
12.5 - 16.5	3/4"	SSW 01S	540.00	700.00	SSF 01S	590.00	770.00
15 - 18	3/4"	SSW 01	640.00	840.00	SSF 01	700.00	900.00
15 - 18	1"	SSW 01L	670.00	870.00	SSF 01L	740.00	960.00
18 - 20	1"	SSW 02	790.00	1000.00	SSF 02	840.00	1090.00
18 - 20	3/4"	SSW 02S	770.00	1000.00	SSF 02S	840.00	1090.00
20 - 23	1"	SSW 1"	770.00	1000.00	SSF 1"	840.00	1090.00
20 - 23	1"	SSW 03	810.00	1030.00	SSF 03	860.00	1130.00
23 - 26	1"	SSW 04	1260.00	1590.00	SSF 04	1340.00	1750.00
23 - 26	1-1/4"	SSW 04L	1260.00	1590.00	SSF 04L	1340.00	1750.00
26 - 30	1-1/4"	SSW 05	1410.00	1830.00	SSF 05	1550.00	2010.00
26 - 30	1-1/2"	SSW 05L	1470.00	1900.00	SSF 05L	1620.00	2080.00
30 - 33	1-1/2"	SSW 06	2040.00	2650.00	SSF 06	2240.00	2915.00
30 - 33	1-1/4"	SSW 06S	2040.00	2650.00	SSF 06S	2240.00	2915.00
33 - 37	1-1/2"	SSW 07	2580.00	3350.00	SSF 07	2800.00	3680.00
37 - 41	2"	SSW 08	3120.00	4050.00	SSF 08	3430.00	4450.00
41 - 46	2"	SSW 09	3500.00	4550.00	SSF 09	3850.00	5000.00
46 - 52	2"	SSW 010	4750.00	6175.00	SSF 010	5225.00	6720.00
46 - 52	2-1/2"	SSW 010L	4780.00	6210.00	SSF 010L	5250.00	6830.00
52 - 60	2-1/2"	SSW 011	9200.00	11700.00	SSF 011	10100.00	12600.00
60 - 66	3"	SSW 012	9600.00	12480.00	SSF 012	10560.00	13730.00
66 - 72	3"	SSW 013S	11500.00	14950.00	SSF 013S	12600.00	15600.00
72 - 78	3-1/4"	SSW 013	11500.00	14950.00	SSF 013	12600.00	15600.00
78 - 83	3-1/2"	SSW 014	13300.00	17290.00	SSF 014	14630.00	19020.00
83 - 93	4"	SSW 015	16500.00	21450.00	SSF 015	18150.00	23600.00
93 - 104	4-1/2"	SSW 016	19400.00	25220.00	SSF 016	21340.00	27740.00

Note :

- All glands are Standard ET Threads - NPT and Metric Thread Available on request
- Also Available on Request :
- Earth Tags and Shrouds
- Adaptors Reducers and Stopping Plugs

BRACO NYLON CABLE GLANDS (PG TYPE)					
SUITABLE OD RANGE	CAT NO. PG THREAD	RATE / UNIT	SUITABLE OD RANGE	CAT NO. METRIC THREAD	RATE / UNIT
3-6.5	PG7	12.00	3-6.5	M12x1.5	20.00
4-8	PG9	14.00	4-8	M16x1.5	23.00
5-10	PG11	16.00	6-12	M20x1.5	25.00
6-12	PG13.5	20.00	13-18	M25x1.5	35.00
10-14	PG16	22.00	16-21	M32x1.5	100.00
12-16	PG19	28.00	22-32	M40x1.5	180.00
13-18	PG21	35.00	32-38	M50x1.5	280.00
18-25	PG29	62.00	37-44	M63x1.5	375.00
22-32	PG36	92.00			
32-38	PG42	150.00			
37-44	PG48	240.00			
42-50	PG63	375.00			



Note :

- All Glands are made from Nylon PA-66 Grade.
- Colour : Ral 7035 for PG and Ral 7011 for Metric Thread.

BRACO BRASS CABLE GLANDS (PG TYPE)					
SUITABLE OD RANGE	CAT NO. PG THREAD	RATE / UNIT	SUITABLE OD RANGE	CAT NO. METRIC THREAD	RATE / UNIT
3-6.5	BPG-7	52.00	3-6.5	BPGM-12	60.00
4-8	BPG-9	75.00	4-8	BPGM-16	95.00
5-10	BPG-11	95.00	6-12	BPGM-20	117.00
6-12	BPG-13.5	116.00	12-16	BPGM-25	160.00
10-14	BPG-16	138.00	16-21	BPGM-32	243.00
11-15	BPG-19	170.00	22-32	BPGM-40	432.00
13-18	BPG-21	193.00	32-38	BPGM-50	820.00
18-25	BPG-29	349.00	37-44	BPGM-63	990.00
22-32	BPG-36	506.00	42-52	BPGM-75	1250.00
32-38	BPG-42	732.00			
37-44	BPG-48	981.00			
42-52	BPG-63	1100.00			





BRACO COPPER CRIMPING RING TERMINALS - NON-INSULATED			
SIZE SQ. MM.	E BOLT	CAT NO.	RATE/ UNIT
0.5	4.2	R-0	2.15
1.5	3.2	R-001	2.15
1.5	3.7	R-002	2.15
1.5	4.2	R-003	2.15
1.5	3.2	R-153	2.15
1.5	3.7	R-048	2.15
1.5	4.2	R-049	2.15
1.5	4.2	R-004	2.15
1.5	5.2	R-005	2.15
1.5	5.2	R-006	2.71
1.5	6.4	R-007	2.65
1.5	6.4	R-106	2.80
2.5	3.7	R-008	2.29
2.5	4.2	R-009	2.22
2.5	5.2	R-010	2.22
2.5	5.2	R-109	2.74
2.5	6.4	R-011	2.50
2.5	5.2	R-110	3.60
2.5	6.4	R-012	3.66
2.5	8.2	R-013	3.29
2.5	6.4	R-111	4.30
2.5	8.2	R-014	4.75
2.5	10.2	R-015	4.54
2.5	10.2	R-151	5.55
2.5	12.7	R-047	4.85
4-6	4.2	R-155	4.00
4-6	5.2	R-050	3.91
4-6	4.2	R-112	4.50
4-6	5.2	R-016	4.69
4-6	5.2	R-157	5.25
4-6	5.2	R-113	4.30
4-6	6.4	R-017	4.74

SIZE SQ. MM.	E BOLT	CAT NO.	RATE/ UNIT
4-6	8.2	R-018	4.52
4-6	6.4	R-019	5.55
4-6	6.4	R-115	6.37
4-6	8.2	R-020	6.16
4-6	8.2	R-116	7.70
4-6	10.2	R-022	7.70
4-6	10.2	R-023	7.70
4-6	12.7	R-024	7.59
10	5.2	R-025	6.30
10	5.2	R-026	5.97
10	6.4	R-120	6.30
10	8.2	R-121	7.94
10	8.2	R-122	9.30
10	10.2	R-027	9.25
10	10.2	R-123	11.77
10	12.7	R-028	11.21
16	5.2	R-124	11.00
16	5.2	R-125	11.40
16	6.4	R-029	10.75
16	6.4	R-126	13.19
16	8.2	R-030	12.38
16	9.7	R-031	14.80
16	8.2	R-127	15.50
16	10.2	R-032	14.28
16	10.2	R-128	16.77
16	12.7	R-033	16.52
25	6.4	R-156	23.16
25	8.2	R-051	23.40
25	6.4	R-129	24.31
25	8.2	R-034	24.05
25	10.2	R-035	22.78
25	6.4	R-130	25.83
25	8.4	R-036	28.14

SIZE SQ. MM.	E BOLT	CAT NO.	RATE/ UNIT
25	10.2	R-131	26.40
25	10.2	R-132	36.29
25	12.7	R-037	34.44
35	6.4	R-133	29.30
35	8.2	R-038	28.15
35	8.2	R-134	32.57
35	10.2	R-039	31.82
35	10.2	R-135	37.75
35	12.7	R-040	36.01
50	8.2	R-136	42.95
50	10.2	R-041	42.29
50	10.2	R-137	45.92
50	10.2	R-138	50.31
50	12.7	R-042	51.14
50	16.2	R-139	61.56
70	10.2	R-140	58.10
70	12.7	R-043	57.10
70	12.7	R-141	68.70
70	16.2	R-142	77.51
95	10.2	R-143	89.70
95	10.2	R-144	93.60
95	12.7	R-044	93.60
95	16.2	R-145	104.00
120	12.7	R-146	119.00
120	16.2	R-147	117.00
120	20.3	R-148	153.00
150	12.7	R-149	236.00
150	16.2	R-045	231.00
150	20.3	R-046	237.00

BRACO COPPER CRIMPING RING TERMINALS - INSULATED			
SIZE SQ. MM.	E BOLT	CAT NO.	RATE/ UNIT
0.5	4.2	RI-0	2.52
1.5	2.2	RI-052	2.52
1.5	3.2	RI-054	2.52
1.5	3.7	RI-055	2.52
1.5	4.2	RI-056	2.52
1.5	3.2	RI-057	2.55
1.5	3.7	RI-058	2.55
1.5	4.2	RI-059	2.55
1.5	4.2	RI-061	2.65
1.5	5.2	RI-062	2.53
1.5	4.2	RI-063	2.60
1.5	5.2	RI-065	3.14
1.5	6.4	RI-066	3.14
1.5	6.4	RI-067	3.22
2.5	3.2	RI-068	2.77
2.5	3.7	RI-069	2.72
2.5	3.7	RI-070	2.98
2.5	4.2	RI-071	2.67
2.5	5.2	RI-072	2.65
2.5	5.2	RI-073	3.23
2.5	6.4	RI-074	2.95
2.5	5.2	RI-075	4.40
2.5	6.4	RI-076	4.12
2.5	8.2	RI-077	3.66
2.5	6.4	RI-078	5.25
2.5	8.2	RI-079	5.20
2.5	10.2	RI-080	4.97
2.5	10.2	RI-081	5.96
2.5	12.7	RI-082	5.20
4-6	4.2	RI-083	4.58
4-6	5.2	RI-084	4.58
4-6	4.2	RI-085	5.44
4-6	5.2	RI-086	5.44
4-6	5.2	RI-087	6.19
4-6	6.4	RI-089	5.44
4-6	8.2	RI-090	5.08
4-6	6.4	RI-092	6.19
4-6	6.4	RI-093	7.05

SIZE SQ. MM.	E BOLT	CAT NO.	RATE/ UNIT
4-6	8.2	RI-094	6.93
4-6	8.2	RI-096	8.80
4-6	10.2	RI-097	8.42
4-6	10.2	RI-099	8.42
4-6	12.7	RI-100	8.10

BRACO COPPER CRIMPING RING TERMINALS - INSULATED (DOUBLE GRIP)			
SIZE SQ. MM.	E BOLT	CAT NO.	RATE/ UNIT
1.5	2.2	RD-435	3.47
1.5	3.2	RD-437	3.47
1.5	3.7	RD-438	3.47
1.5	4.2	RD-439	3.47
1.5	3.2	RD-440	3.47
1.5	3.7	RD-441	3.47
1.5	4.2	RD-442	3.47
1.5	4.2	RD-444	3.47
1.5	5.2	RD-445	3.47
1.5	4.2	RD-446	3.47
1.5	5.2	RD-448	3.96
1.5	6.4	RD-449	3.85
1.5	6.4	RD-450	3.96
2.5	3.2	RD-451	3.70
2.5	3.7	RD-452	3.70
2.5	3.7	RD-453	3.70
2.5	4.2	RD-454	3.70
2.5	5.2	RD-455	3.70
2.5	5.2	RD-456	4.00
2.5	6.4	RD-457	4.00
2.5	5.2	RD-458	4.97
2.5	6.4	RD-459	4.97
2.5	8.2	RD-460	4.97
2.5	6.4	RD-461	6.00
2.5	8.2	RD-462	6.00
2.5	10.2	RD-463	6.00
2.5	10.2	RD-464	6.60
2.5	12.7	RD-465	6.00
4-6	4.2	RD-466	6.00
4-6	5.2	RD-467	6.00

SIZE SQ. MM.	E BOLT	CAT NO.	RATE/ UNIT
4-6	4.2	RD-468	6.74
4-6	5.2	RD-469	6.74
4-6	5.2	RD-470	7.38
4-6	6.4	RD-472	6.93
4-6	8.2	RD-473	6.74
4-6	6.4	RD-475	7.65
4-6	6.4	RD-476	8.47
4-6	8.2	RD-477	8.47
4-6	8.2	RD-479	10.12
4-6	10.2	RD-480	9.84
4-6	10.2	RD-482	9.84
4-6	12.7	RD-483	9.60



BRACO RING TONGUE FORK TERMINALS					
SIZE SQ. MM.	CAT NO.	RATE / UNIT	SIZE SQ. MM.	CAT NO.	RATE / UNIT
1.5-3.1	RF-235	2.80	4-6-4.1	RF-243	4.88
1.5-3.6	RF-240	2.80	4-6-4.1	RF-245	5.73
1.5-3.1	RF-241	2.80	4-6-5.1	RF-246	5.73
1.5-3.6	RF-244	2.80	4-6-5.1	RF-247	8.05
1.5-4.1	RF-237	2.80	4-6-6.1	RF-248	6.81
1.5-4.1	RF-236	2.80	10-4.1	RF-865	7.81
1.5-5.1	RF-238	3.66	10-5.1	RF-866	7.81
1.5-6.1	RF-861	3.66	10-6.1	RF-867	7.81
2.5-3.1	RF-862	2.93	10-8.1	RF-868	9.40
2.5-3.6	RF-863	2.93	16-5.1	RF-869	12.45
2.5-4.1	RF-239	2.93	16-6.1	RF-870	13.30
2.5-5.1	RF-242	3.29	16-8.1	RF-871	14.28
2.5-6.1	RF-864	3.29	16-8.1	RF-872	15.90

BRACO RING FORK TERMINALS (DOUBLE GRIP)					
SIZE SQ. MM.	CAT NO.	RATE / UNIT	SIZE SQ. MM.	CAT NO.	RATE / UNIT
1.5-3.1	RFD-899	4.05	2.5-3.6	RFD-908	4.40
1.5-3.6	RFD-900	4.05	2.5-4.1	RFD-909	4.40
1.5-3.1	RFD-901	4.05	2.5-5.1	RFD-910	4.77
1.5-3.6	RFD-902	4.05	2.5-6.1	RFD-911	4.77
1.5-4.1	RFD-903	4.05	4-6-4.1	RFD-912	7.20
1.5-4.1	RFD-904	4.05	4-6-4.1	RFD-913	7.95
1.5-5.1	RFD-905	4.77	4-6-5.1	RFD-914	7.91
1.5-6.1	RFD-906	4.77	4-6-5.1	RFD-915	10.40
2.5-3.1	RFD-907	4.77	4-6-6.1	RFD-916	9.05

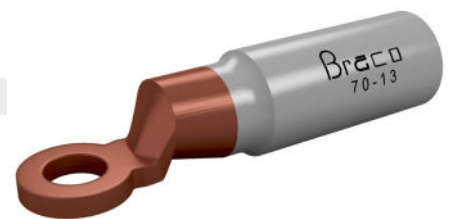
BRACO RING TONGUE FORK TERMINALS (INSULATED)					
SIZE SQ. MM.	CAT NO.	RATE / UNIT	SIZE SQ. MM.	CAT NO.	RATE / UNIT
1.5-3.1	RFI-873	3.90	2.5-3.6	RFI-882	4.27
1.5-3.6	RFI-874	3.90	2.5-4.1	RFI-883	4.27
1.5-3.1	RFI-875	3.90	2.5-5.1	RFI-884	4.50
1.5-3.6	RFI-876	3.90	2.5-6.1	RFI-885	4.50
1.5-4.1	RFI-877	3.90	4-6-4.1	RFI-886	6.95
1.5-4.1	RFI-878	3.90	4-6-4.1	RFI-887	7.81
1.5-5.1	RFI-879	4.50	4-6-5.1	RFI-888	7.81
1.5-6.1	RFI-880	4.50	4-6-5.1	RFI-889	10.24
2.5-3.1	RFI-881	4.27	4-6-6.1	RFI-890	8.91

BRACO SNAP ON TERMINALS					
SIZE SQ. MM.	CAT NO.	RATE / UNIT	SIZE SQ. MM.	CAT NO.	RATE / UNIT
2	8351	4.41	2.5	8347	4.73
1.5	8352	6.25	2.5	8348	6.63

BRACO OPEN CLOSE SOLDERING RING TERMINALS					
SIZE SQ. MM.	CAT NO.	RATE / UNIT	SIZE SQ. MM.	CAT NO.	RATE / UNIT
1.5-4.2	OC-71	2.31	25-8.2	OC-77	18.65
2.5-5.2	OC-72	2.41	35-8.2	OC-78	24.90
4-5.2	OC-73	3.90	50-10.2	OC-79	43.20
6-6.5	OC-74	4.51	70-10.2	OC-80	67.30
10-6.5	OC-75	6.19	95-12.7	OC-81	122.00
16-8.2	OC-76	10.75	120-12.7	OC-82	157.00

BRACO BIMETALLIC TERMINALS (FRICTION WELDED)		
SIZE SQ. MM.	CAT NO.	RATE/UNIT
10	BMT-10	214.00
16	BMT-16	214.00
25	BMT-25	222.00
35	BMT-35	225.00
50	BMT-50	270.00
70	BMT-70	276.00
95	BMT-95	290.00
120	BMT-120	490.00

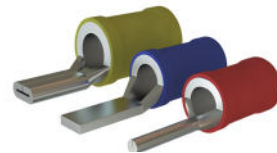
SIZE SQ. MM.	CAT NO.	RATE/UNIT
150	BMT-150	501.00
185	BMT-185	750.00
240	BMT-240	775.00
300	BMT-300	850.00
400	BMT-400	1115.00
500	BMT-500	1225.00
630	BMT-630	1595.00
800	BMT-800	3790.00
1000	BMT-1000	4200.00



BRACO COPPER CRIMPING PIN TERMINALS - NON-INSULATED		
SIZE SQ. MM.	CAT NO.	RATE/UNIT
0.5	P-0	1.95
1.5	P-9	1.95
1.5	P-35	2.05
2.5	P-1	2.07
2.5	P-2	2.12
4	P-3	3.97
4	P-4	4.78
6	P-5	4.50
6	P-6	6.49
10	P-7	6.52
16	P-8	11.22
25	P-86	24.98
35	P-87	31.87
50	P-88	46.14
70	P-94	69.13
95	P-95	100.00

BRACO COPPER CRIMPING PIN TERMINALS - INSULATED		
SIZE SQ. MM.	CAT NO.	RATE/UNIT
0.5	PI-0	2.36
1.5	PI-17	2.36
1.5	PI-40	2.36
2.5	PI-18	2.51
2.5	PI-19	2.43
4	PI-20	4.57
4	PI-21	5.49
6	PI-22	4.96
6	PI-23	6.97
10	PI-24	8.70
16	PI-25	16.01

BRACO COPPER CRIMPING PIN TERMINALS - INSULATED (DOUBLE GRIP)		
SIZE SQ. MM.	CAT NO.	RATE/UNIT
1.5	PD-26	3.31
1.5	PD-42	3.31
2.5	PD-27	3.43
2.5	PD-28	3.55
4	PD-29	6.15
4	PD-30	7.21
6	PD-31	7.21
6	PD-32	10.17



BRACO COPPER CRIMPING FORK TERMINALS - NON-INSULATED			
SIZE SQ. MM.	E BOLT	CAT NO.	RATE/UNIT
0.5	3.5	F-0	1.77
1.5	5.1	F-214	3.46
1.5	3.5	F-249	1.77
1.5	3.1	F-250	2.38
2.5	3.5	F-251	2.07
2.5	5	F-280	4.07
4-6	3.1	F-252	3.31
4-6	3.5	F-253	3.51
10	6.5	F-254	9.56
10	8.2	F-255	9.56

BRACO COPPER CRIMPING FORK TERMINALS - INSULATED			
SIZE SQ. MM.	E BOLT	CAT NO.	RATE/UNIT
0.5	3.5	FI-0	2.16
1.5	5.1	FI-925	3.91
1.5	3.5	FI-926	2.16
1.5	3.1	FI-927	2.64
2.5	3.5	FI-928	2.40
2.5	5	FI-929	4.41
4-6	3.1	FI-930	3.89
4-6	3.5	FI-931	4.07
10	6.5	FI-932	11.20
10	8.2	FI-933	11.20

BRACO COPPER CRIMPING FORK TERMINALS - INSULATED (DOUBLE GRIP)			
SIZE SQ. MM.	E BOLT	CAT NO.	RATE/UNIT
1.5	5.1	FD-934	4.74
1.5	3.5	FD-935	2.96
1.5	3.1	FD-936	3.61
2.5	3.5	FD-937	3.36
2.5	5	FD-938	5.50
4-6	3.1	FD-939	5.50
4-6	3.5	FD-940	5.50
10	6.5	FD-941	15.99
10	8.2	FD-942	15.99



BRACO COPPER TUBE TERMINALS (LIGHT DUTY)		
SIZE SQ. MM.	CAT NO.	RATE/ UNIT
2.5-5.2	CT - 05	4.05
4-6.2	CT - 06	4.96
6-6.2	CT - 07	7.05
10-6.2	CT - 08	7.85
16-6.2	CT - 09	11.30
25-6.2	CT - 10	20.94
35-6.2	CT - 11	25.57
35-8.2	CT - 12	25.57
50-6.2	CT - 13	33.80
50-8.2	CT - 14	33.80
50-10.2	CT - 15	33.80
70-8.2	CT - 16	56.90
70-10.2	CT - 17	56.90
70-12.7	CT - 18	56.90
95-10.2	CT - 19	77.85
95-12.7	CT - 20	77.85
120-10.2	CT - 21	101.00
120-12.7	CT - 22	101.00
120-16.2	CT - 23	101.00
150-10.2	CT - 24	148.00
150-12.7	CT - 25	148.00
150-16.2	CT - 26	148.00
185-12.7	CT - 27	217.00
185-16.2	CT - 28	217.00
225-16.2	CT - 231	276.00
240-16.2	CT - 29	310.00
240-20.3	CT - 30	310.00
300-16.2	CT - 31	412.00
300-20.3	CT - 32	412.00
400-20.3	CT - 33	614.00
500-20.3	CT - 34	864.00
630-20.3	CT - 35	1240.00

SIZE SQ. MM.	CAT NO.	RATE/ UNIT
800	CT - 62	1988.00
1000	CT - 76	3810.00

BRACO COPPER TUBE TERMINALS (HEAVY DUTY - LONG BARREL)		
SIZE SQ. MM.	CAT NO.	RATE/ UNIT
25-8.2	CT - 82	22.60
35-8.2	CT - 83	38.10
50-8.2	CT - 84	69.00
70-10.5	CT - 85	104.00
95-12.7	CT - 86	158.00
120-12.7	CT - 87	216.00
150-12.7	CT - 88	267.00
185-12.7	CT - 89	365.00
240-16.2	CT - 90	515.00
300-16.2	CT - 91	718.00
400-20.3	CT - 92	1129.00
500-20.3	CT - 93	1670.00
630-20.3	CT - 94	2311.00

BRACO COPPER TUBE TERMINALS (HEAVY DUTY)		
SIZE SQ. MM.	CAT NO.	RATE/ UNIT
1.5-4	CT-711	3.70
1.5-5	CT-538	3.70
1.5-6	CT-539	3.70
2.5-4	CT-388	4.07
2.5-5	CT-540	4.07
2.5-6	CT-541	4.07
2.5-8	CT-762	4.50
4-4	CT-764	5.55
4-5	CT-389	5.42
4-6	CT-543	5.42
4-8	CT-763	5.63

SIZE SQ. MM.	CAT NO.	RATE/ UNIT
6-5	CT-390	7.42
6-6	CT-544	7.42
6-8	CT-545	7.42
6-10	CT-854	8.58
10-5	CT-822	8.22
10-6	CT-353	8.22
10-8	CT-547	8.22
10-10	CT-855	13.74
10-12	CT-856	15.00
16-5	CT-696	11.38
16-6	CT-354	11.38
16-8	CT-549	11.38
16-10	CT-657	18.56
16-12	CT-858	18.56
25-6	CT-355	17.60
25-8	CT-551	17.60
25-10	CT-552	17.60
25-12	CT-765	17.60
35-6	CT-542	28.82
35-8	CT-356	28.82
35-10	CT-554	28.82
35-12	CT-853	28.82
50-6	CT-746	46.19
50-8	CT-357	46.19
50-10	CT-556	46.19
50-12	CT-698	46.19
50-16	CT-699	47.75
70-8	CT-557	73.80
70-10	CT-358	73.80
70-12	CT-559	73.80
70-14	CT-795	79.30
70-16	CT-780	79.30
70-20	CT-781	79.30
95-8	CT-752	111.00

SIZE SQ. MM.	CAT NO.	RATE/ UNIT
95-10	CT-359	111.00
95-12	CT-561	111.00
95-14	CT-796	113.00
95-16	CT-672	113.00
95-20	CT-673	113.00
120-8	CT-782	155.00
120-10	CT-700	155.00
120-12	CT-241	155.00
120-14	CT-797	155.00
120-16	CT-546	155.00
120-20	CT-798	155.00
150-8	CT-783	212.00
150-10	CT-676	212.00
150-12	CT-242	212.00
150-14	CT-799	212.00

SIZE SQ. MM.	CAT NO.	RATE/ UNIT
150-16	CT-564	212.00
150-20	CT-565	212.00
185-10	CT-652	274.00
185-12	CT-639	274.00
185-14	CT-800	274.00
185-16	CT-243	274.00
185-20	CT-704	274.00
240-10	CT-787	411.00
240-12	CT-705	411.00
240-14	CT-801	411.00
240-16	CT-244	411.00
240-20	CT-567	411.00
300-12	CT-597	614.00
300-14	CT-802	614.00

SIZE SQ. MM.	CAT NO.	RATE/ UNIT
300-16	CT-245	614.00
300-20	CT-569	614.00
400-12	CT-412	990.00
400-14	CT-414	990.00
400-16	CT-246	990.00
400-20	CT-571	990.00
500-16	CT-572	1282.00
500-20	CT-247	1282.00
630-16	CT-807	1860.00
630-20	CT-248	1860.00
800-20	CT-808	3220.00
1000-20	CT-809	4044.00

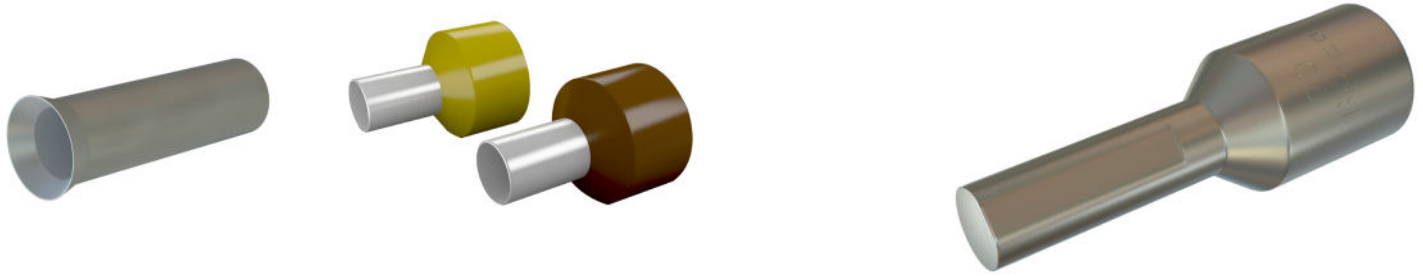
BRACO HEAVY DUTY COPPER IN-LINE CONNECTORS		
SIZE SQ. MM.	CAT NO.	RATE/ UNIT
1.5-J-15	ILC-453	3.26
1.5-J-22	ILC-41	4.88
2.5-J-15	ILC-454	3.52
2.5-J-22	ILC-42	4.66
4-J-22	ILC-43	6.40
6-J-15	ILC-4	5.24
6-J-22	ILC-44	6.90
10-J-20	ILC-460	7.90
10-J-22	ILC-45	8.10
16-J-20	ILC-6	8.83
16-J-35	ILC-46	13.80
25-J-32	ILC-24	18.29

SIZE SQ. MM.	CAT NO.	RATE/ UNIT
25-J-47	ILC-47	25.90
35-J-36	ILC-25	29.00
35-J-45	ILC-48	38.00
50-J-40	ILC-26	46.90
50-J-50	ILC-49	57.60
70-J-40	ILC-51	65.40
70-J-50	ILC-27	81.50
95-J-45	ILC-52	102.00
95-J-60	ILC-28	126.00
120-J-45	ILC-53	121.00
120-J-65	ILC-29	177.00
150-J-55	ILC-54	183.00
150-J-70	ILC-30	222.00
185-J-65	ILC-55	270.00

SIZE SQ. MM.	CAT NO.	RATE/ UNIT
185-J-75	ILC-31	294.00
240-J-80	ILC-56	375.00
240-J-89	ILC-32	420.00
300-J-85	ILC-57	525.00
300-J-95	ILC-33	590.00
400-J-90	ILC-58	810.00
400-J-115	ILC-34	1030.00
500-J-100	ILC-59	1075.00
500-J-117	ILC-35	1296.00
630-J-110	ILC-61	1540.00
630-J-120	ILC-36	1670.00
800-J-150	ILC-62	2680.00
1000-J-170	ILC-63	3900.00

BRACO HEAVY DUTY COPPER IN LINE CONNECTORS INSULATED		
SIZE SQ. MM.	CAT NO.	RATE / UNIT
1.5	ILCI-63	3.69
2.5	ILCI-64	3.95
4-6	ILCI-65	6.00



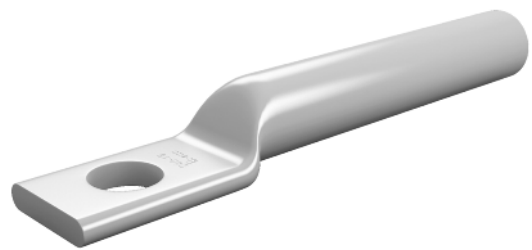


BRACO END SEALING FERRULES (NON INSULATED)					
SIZE SQ. MM.	CAT NO.	RATE / UNIT	SIZE	CAT NO.	RATE / UNIT
0.5-6	ES-08	0.39	6-10	ES-18	1.17
0.75-6	ES-09	0.39	6-12	ES-19	1.37
1-6	ES-10	0.39	6-15	ES-20	1.58
1-10	ES-11	0.63	10-12	ES-21	1.58
1.5-7	ES-12	0.63	10-15	ES-22	1.90
1.5-10	ES-13	0.63	10-18	ES-23	2.21
2.5-7	ES-14	0.63	16-12	ES-24	1.90
2.5-12	ES-15	0.90	16-15	ES-25	2.21
4-9	ES-16	0.90	16-18	ES-26	2.74
4-12	ES-17	1.05			

BRACO END SEALING FERRULES (INSULATED)					
SIZE SQ. MM.	CAT NO.	RATE / UNIT	SIZE	CAT NO.	RATE / UNIT
0.5	ESI-0.5-8	0.74	2.5	ESI-2.5-12	1.24
0.75	ESI-0.75-8	0.74	4	ESI-4-10	1.49
1.00	ESI-1-8	0.76	4	ESI-4-12	1.85
1.00	ESI-1-10	0.85	6	ESI-6-12	2.32
1.00	ESI-1-12	1.06	10	ESI-10-12	2.99
1.5	ESI-1.5-8	0.87	16	ESI-16-12	3.61
1.5	ESI-1.5-10	0.97	25	ESI-25-16	5.67
2.5	ESI-2.5-8	1.06	35	ESI-35-16	7.11
2.5	ESI-2.5-10	1.11			

BRACO END SEALING FERRULES TWIN TYPE (INSULATED)					
SIZE SQ. MM.	CAT NO.	RATE / UNIT	SIZE	CAT NO.	RATE / UNIT
0.5	ESIT-0.5-8	1.48	2.5	ESIT-2.5-12	2.54
0.75	ESIT-0.75-8	1.48	4	ESIT-4-10	3.09
1.00	ESIT-1-8	1.55	4	ESIT-4-12	3.81
1.00	ESIT-1-10	1.70	6	ESIT-6-12	4.73
1.5	ESIT-1.5-8	1.80	10	ESIT-10-12	6.18
1.5	ESIT-1.5-10	2.00	16	ESIT-16-12	7.41
2.5	ESIT-2.5-8	2.11	25		
2.5	ESIT-2.5-10	2.21	35		

BRACO COPPER CRIMPING REDUCER TERMINALS		
SIZE SQ. MM.	CAT NO.	RATE / UNIT
2.5	WPC-1	16.40
2.5	WPC-7	15.30
4	WPC-15	16.40
4	WPC-16	15.30
6	WPC-17	16.00
6	WPC-18	14.70
10	WPC-19	19.60
10	WPC-20	17.40
10	WPC-21	21.60
10	WPC-22	20.00
16	WPC-23	35.10
16	WPC-24	35.10
16	WPC-2	28.20
25	WPC-25	41.50
25	WPC-3	55.10
35	WPC-4	58.70
50	WPC-26	74.40
70	WPC-27	103.00
70	WPC-6	154.00
70	WPC-28	165.00
95	WPC-29	169.00
95	WPC-31	139.00
95	WPC-32	214.00
120	WPC-34	174.00
120	WPC-35	248.00
150	WPC-10	360.00
150	WPC-37	281.00
185	WPC-30	450.00
185	WPC-38	369.00
240	WPC-44	695.00
240	WPC-43	544.00
300	WPC-45	752.00
300	WPC-47	695.00



BRACO ALUMINIUM CRIMPING TERMINALS		
SIZE SQ.MM	CAT NO.	RATE/ UNIT
2.5-3	AT-151	2.40
2.5-3	AT-309	2.40
4-4	AT-155	2.40
4-5	AT-317	2.40
6-5	AT-158	2.40
6-6	AT-313	2.40
10-6	AT-214	3.32
10-8	AT-215	3.32
16-6	AT-252	4.30
16-8	AT-216	4.30
16-10	AT-217	4.30
25-6	AT-253	5.78
25-8	AT-218	5.78
25-10	AT-219	5.78
25-12	AT-220	5.78
35-6	AT-254	7.62
35-8	AT-221	7.62
35-10	AT-222	7.62
50-8	AT-255	12.10
50-10	AT-312	12.10
50-12	AT-224	12.10
70-8	AT-256	18.33
70-10	AT-225	18.33
70-12	AT-226	18.33
95-10	AT-227	19.90
95-12	AT-228	19.90
95-16	AT-229	19.90
120-10	AT-257	28.66
120-12	AT-230	28.66
120-16	AT-231	28.66
150-10	AT-258	36.15
150-12	AT-232	36.15

SIZE SQ.MM	CAT NO.	RATE/ UNIT
150-16	AT-233	36.15
185-10	AT-311	48.60
185-12	AT-234	48.60
185-16	AT-235	48.60
225-12	AT-320	72.90
240-12	AT-236	77.90
240-16	AT-237	77.90
240-20	AT-238	77.90
300-16	AT-300	104.00
300-20	AT-259	104.00
400-20	AT-260	155.00
500-20	AT-296	236.00
630-20	AT-261	306.00
800--	AT-318	447.00
1000--	AT-319	705.00

BRACO ALUMINIUM CRIMPING TERMINALS - LONG BARREL		
SIZE SQ.MM	CAT NO.	RATE/ UNIT
2.5-3	AT-551	3.05
2.5-3	AT-509	3.05
4-4	AT-555	3.05
4-5	AT-617	3.14
6-5	AT-558	3.14
6-6	AT-513	3.14
10-6	AT-514	3.90
10-8	AT-515	3.90
16-6	AT-552	5.70
16-8	AT-516	5.70
16-10	AT-517	5.70
25-8	AT-518	6.79
25-10	AT-519	6.79
25-12	AT-520	6.79
35-8	AT-521	9.70

SIZE SQ.MM	CAT NO.	RATE/ UNIT
35-10	AT-522	9.70
50-8	AT-655	15.60
50-10	AT-512	15.60
50-12	AT-524	15.60
70-8	AT-556	22.90
70-10	AT-525	22.90
70-12	AT-526	22.90
95-10	AT-527	25.25
95-12	AT-528	25.25
95-16	AT-529	25.25
120-10	AT-557	36.60
120-12	AT-530	36.60
120-16	AT-531	36.60
150-10	AT-658	46.50
150-12	AT-532	46.50
150-16	AT-533	46.50
185-10	AT-511	60.05
185-12	AT-534	60.05
185-16	AT-535	60.05
240-12	AT-536	93.70
240-16	AT-537	93.70
240-20	AT-538	93.70
300-16	AT-500	131.00
300-20	AT-559	131.00
400-20	AT-560	207.00
500-20	AT-596	296.00
630-20	AT-561	385.00
800--	AT-618	591.00
1000--	AT-619	902.00

BRACO ALUMINIUM CRIMPING CONNECTOR		
SIZE SQ.MM	CAT NO.	RATE/UNIT
2.5	ILA-6	1.90
4	ILA-5	1.90
6	ILA-13	1.90
10	ILA-14	2.47
16	ILA-4	3.61
25	ILA-3	4.95
35	ILA-2	6.15
50	ILA-12	9.78
70	ILA-1	17.15
95	ILA-15	19.73
120	ILA-9	26.00
150	ILA-10	33.06
185	ILA-11	43.20
240	ILA-16	70.15
300	ILA-17	91.00
400	ILA-18	142.00
500	ILA-19	219.00
630	ILA-20	281.00
800	ILA-148	342.00
1000	ILA-149	610.00

BRACO ALUMINIUM ALLOY TUBULAR BIMETALLIC TERMINALS		
SIZE SQ.MM	CAT NO.	RATE/UNIT
10-6	ATB-1	4.95
10-8	ATB-2	4.95
16-6	ATB-3	6.16
16-8	ATB-4	6.16
25-8	ATB-5	8.25
25-10	ATB-6	8.25
35-8	ATB-7	10.67
35-10	ATB-8	10.67
50-8	ATB-9	16.50
50-10	ATB-10	16.50
70-10	ATB-11	24.22
70-12	ATB-12	24.22
95-10	ATB-13	27.45
95-12	ATB-14	27.45
120-10	ATB-15	38.06

SIZE SQ.MM	CAT NO.	RATE/UNIT
120-12	ATB-16	38.06
150-12	ATB-17	49.27
150-16	ATB-18	49.27
185-12	ATB-19	63.25
185-16	ATB-20	63.25
240-12	ATB-22	104.00
240-16	ATB-23	104.00
300-16	ATB-24	144.00
300-20	ATB-25	144.00
400-20	ATB-26	209.00
500-20	ATB-27	326.00
630-20	ATB-28	405.00
800--	ATB-29	635.00
1000--	ATB-30	979.00

BRACO ALUMINIUM CRIMPING REDUCER TERMINALS		
SIZE SQ.MM	CAT NO.	RATE/UNIT
2.5	WPA-1	7.30
2.5	WPA-7	7.05
4	WPA-15	7.30
4	WPA-16	7.05
6	WPA-17	7.30
6	WPA-18	7.05
10	WPA-19	8.30
10	WPA-20	8.05
10	WPA-21	8.05
10	WPA-22	8.05
16	WPA-23	12.25
16	WPA-24	12.25
16	WPA-2	10.96
25	WPA-25	14.83
25	WPA-3	16.45

SIZE SQ.MM	CAT NO.	RATE/UNIT
35	WPA-4	17.41
50	WPA-26	24.18
70	WPA-27	37.00
70	WPA-6	43.50
70	WPA-28	45.95
95	WPA-29	55.47
95	WPA-8	62.88
95	WPA-31	49.98
95	WPA-32	62.88
120	WPA-33	79.00
120	WPA-34	73.50
120	WPA-35	83.85
120	WPA-36	93.40
150	WPA-10	119.00
150	WPA-37	104.00
185	WPA-30	125.00
185	WPA-38	120.00

SIZE SQ.MM	CAT NO.	RATE/UNIT
240	WPA-44	218.00
240	WPA-43	202.00
300	WPA-45	236.00
300	WPA-47	221.00

BRACO CORROSION INHABITING COMPOUND	
CAT NO.	RATE/UNIT
BTZ - 888	57.50



- GST will be charged extra as Applicable.
- Prices Listed Above are on the basis of Ex-Works.
- This Price List Supercedes all our previous Price Lists.
- Prices are subject to change without prior Notice.
- Prices of other tailor made items can be availed on Request.
- Subject to Mumbai Jurisdiction Only.
- For Selection And Technical Data - Kindly contact us.

- HSN Codes :
- | | |
|---------------------------------|----------|
| Cable Glands | 85389000 |
| Copper Cable Lugs And Terminals | 85369090 |
| Aluminium Lugs and Connectors | 85369090 |
| PG Glands | 85389000 |
| Earth Tags | 85389000 |
| PVC Shrouds | 39269099 |